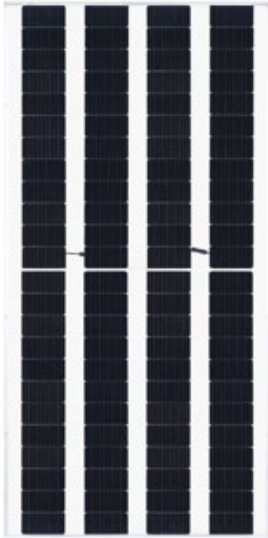


HT48-18X(ND)-F

Double Glass TOPCon PV Module

HIGH High power

HT48-18X(ND)-F 375W/380W/385W/390W/395W



- Module Efficiency: 15.3%
- No. of Cells 96(4×24)
- Weight 32.5(±0.5)kg
- Dimensions 2278×1134×30mm
- Light transmittance 36%
- For Australia market



MULTIWAY+

Shanghai Aerospace Automobile Electromechanical Co., Ltd.
Website: www.ht-saae.com.au
Address: 222 Caoxi Rd, the 8th Floor of Spaceflight Building, Shanghai P.R. China

Made in China



Half cut cell technology can reduce the internal power loss and improve module overall power. Excellent heat dissipation avoids hot spot production.

15/30Ys

Product warranty
15Yrs for ground mounted
30Yrs for rooftop

30Ys

Warranty on power output

EL

Microcrack resistant double glass structure enhance reliability, double EL tested of high quality control.



Entire module certified to with stand extreme wind(2400 Pa) and snow loads (5400 Pa)

TOPCon

Double glass, The optimized number and width of main gate lines, Maximize the light receiving area of modules and Reduce module power consumption.

1500V

Designed for high voltage systems of up to 1500 VDC, increasing the string length of solar systems and saving on BoS costs.

2%

All the modules are sorted and packaged by amperage, reducing mismatch losses and maximizing system output.

0~+3%

Power sorting tolerance
0~+3%
guaranteed

Anti PID

PID resistant
(available on request)

Comprehensive and first-rate certification system

IEC 61215:2021, IEC 61730:2023 Latest Standard
SA 8000, ISO 9001, ISO 14001 and ISO 45001
meeting the highest international standards
Strict quality control



HT48-18X(ND)-F-375W/380W/385W/390W/395W

Electrical Characteristics (STC)

Module Type	HT48-18X(ND)-F				
Maximum Power(Pmax)	375W	380W	385W	390W	395W
Open Circuit Voltage(Voc)	33.6V	33.7V	33.8V	33.9V	34.0V
Short Circuit Current(Isc)	14.21A	14.35A	14.49A	14.60A	14.71A
Maximum Power Voltage(Vmp)	28.1V	28.2V	28.3V	28.4V	28.6V
Maximum Power Current(Imp)	13.35A	13.49A	13.63A	13.74A	13.83A
Module Efficiency	14.5%	14.7%	14.9%	15.1%	15.3%
Power/Voc/Isc Measurement Tolerances	±3%/±5%/±5%				
Maximum System Voltage	1500V DC(IEC)				
Maximum Series Fuse Rating	30A				
Operating Temperature	-40°C to +85°C				

* STC: AM 1.5, Irradiance 1000W/m², module temperature 25°C

Electrical Characteristics (NMOT)

Module Type	HT48-18X(ND)-F				
Maximum Power(Pmax)	285W	289W	293W	297W	300W
Open Circuit Voltage(Voc)	32.3V	32.4V	32.4V	32.5V	32.6V
Short Circuit Current(Isc)	11.45A	11.56A	11.68A	11.77A	11.85A
Maximum Power Voltage(Vmp)	27.0V	27.1V	27.2V	27.3V	27.5V
Maximum Power Current(Imp)	10.56A	10.66A	10.77A	10.88A	10.91A

* NMOT: Irradiance 800W/m², ambient temperature 20°C, wind speed 1m/s

Bifacial NamePlate Irradiance(BNPI)

Maximum Power(Pmax)	413W	419W	424W	430W	436W
Open Circuit Voltage(Voc)	33.6V	33.7V	33.8V	33.9V	34.0V
Short Circuit Current(Isc)	15.63A	15.79A	15.94A	16.06A	16.18A
Maximum Power Voltage(Vmp)	28.1V	28.2V	28.3V	28.4V	28.6V
Maximum Power Current(Imp)	14.70A	14.86A	14.98A	15.14A	15.24A

* BNPI:front 1000W/m²,rear 135W/m²

Nominal Module Operating Temperature(NMOT) 43±2°C

Temperature Coefficient of Pmax γ (Pm) -0.31%/°C

Temperature Coefficient of Voc β (Voc) -0.25%/°C

Temperature Coefficient of Isc α (Isc) 0.046%/°C

Solar Cells Monocrystalline

No. of Cells 96 (4×24)

Dimensions 2278×1134×30mm

Weight 32.5(±0.5)kg

Glass (Front /Back) High transmission coated tempered glass/Heat strengthened glass

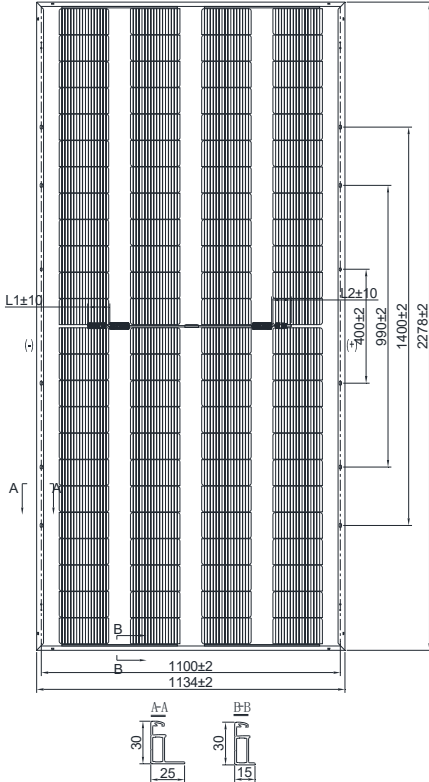
Frame Anodized aluminum alloy

Junction Box/Connectors IP68/PV-HT005-1
Shanghai Aerospace Automobile Electromechanical Co., Ltd.

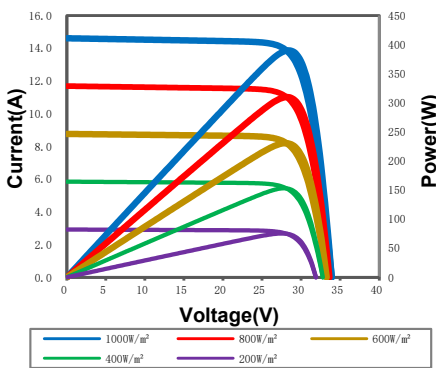
Cable 4mm² (IEC) Length: (+) 400mm, (-) 300mm or customized

Fire Rating Class C

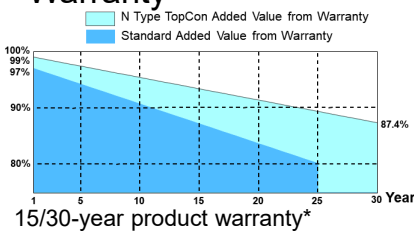
Packaging Configuration 36 pcs/box: 720 pcs/ 40' HQ Container



IV Curves



Warranty



15/30-year product warranty*

30-year warranty on power output*

* Specific information is referred to the product quality guarantee

*The module recycling should be carried out by the professional institutions at the end of module life cycle

*Copyright@2024V2 Specifications are subject to change without further notification*Only available in Australia

HT48-18X(ND)-F-375W/380W/385W/390W/395W

Electrical Characteristics (STC)

Module Type	HT48-18X(ND)-F				
Maximum Power(Pmax)	375W	380W	385W	390W	395W
Open Circuit Voltage(Voc)	33.6V	33.7V	33.8V	33.9V	34.0V
Short Circuit Current(Isc)	14.21A	14.35A	14.49A	14.60A	14.71A
Maximum Power Voltage(Vmp)	28.1V	28.2V	28.3V	28.4V	28.6V
Maximum Power Current(Imp)	13.35A	13.49A	13.63A	13.74A	13.83A
Module Efficiency	14.5%	14.7%	14.9%	15.1%	15.3%
Power/Voc/Isc Measurement Tolerances	±3%/±5%/±5%				
Maximum System Voltage	1500V DC(IEC)				
Maximum Series Fuse Rating	30A				
Operating Temperature	-40°C to +85°C				

* STC: AM 1.5, Irradiance 1000W/m², module temperature 25°C

Electrical Characteristics (NMOT)

Module Type	HT48-18X(ND)-F				
Maximum Power(Pmax)	285W	289W	293W	297W	300W
Open Circuit Voltage(Voc)	32.3V	32.4V	32.4V	32.5V	32.6V
Short Circuit Current(Isc)	11.45A	11.56A	11.68A	11.77A	11.85A
Maximum Power Voltage(Vmp)	27.0V	27.1V	27.2V	27.3V	27.5V
Maximum Power Current(Imp)	10.56A	10.66A	10.77A	10.88A	10.91A

* NMOT: Irradiance 800W/m², ambient temperature 20°C, wind speed 1m/s

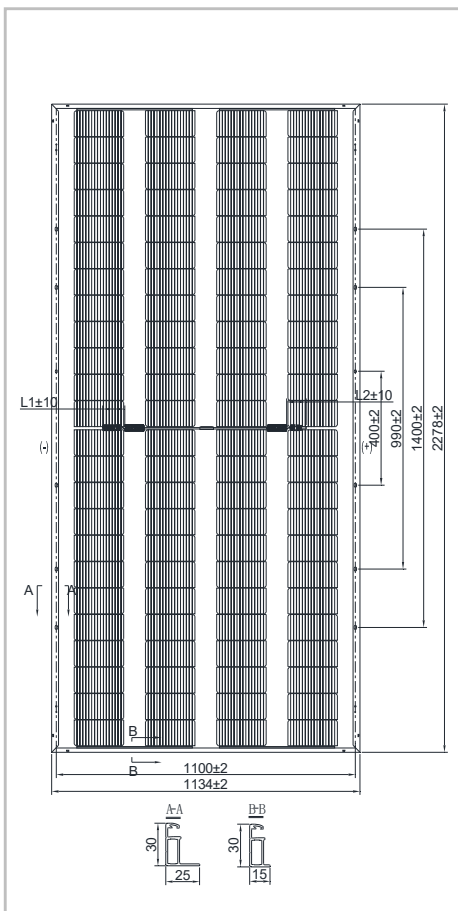
Bifacial output-rearside power gain

5%	Maximum Power(Pmax)	394W	399W	404W	410W	415W
	Module Efficiency	15.2%	15.4%	15.6%	15.9%	16.1%
15%	Maximum Power(Pmax)	431W	437W	443W	449W	454W
	Module Efficiency	16.7%	16.9%	17.1%	17.4%	17.6%
25%	Maximum Power(Pmax)	469W	475W	481W	488W	494W
	Module Efficiency	18.1%	18.4%	18.6%	18.9%	19.1%

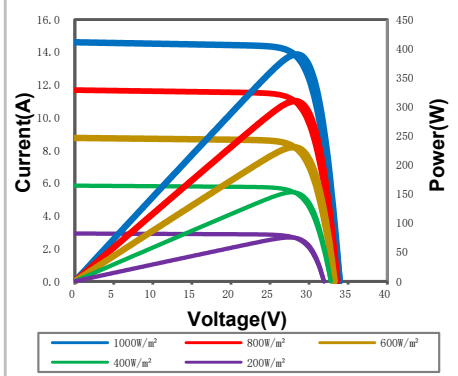
Bifaciality coefficient

φVoc	98 (±5) %
φIsc	80 (±5) %
φPmax	80 (±5) %

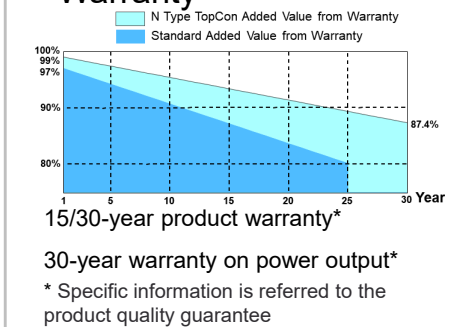
Solar Cells	Monocrystalline
No. of Cells	96 (4×24)
Dimensions	2278×1134×30mm
Weight	32.5(±0.5)kg
Glass (Front /Back)	High transmission coated tempered glass/Heat strengthened glass
Frame	Anodized aluminum alloy
Junction Box/Connectors	IP68/PV-HT005-1 Shanghai Aerospace Automobile Electromechanical Co., Ltd.
Cable	4mm ² (IEC) Length: (+) 400mm, (-) 300mm or customized
Fire Rating	Class C
Packaging Configuration	36 pcs/box: 720 pcs/ 40' HQ Container



IV Curves



Warranty



*The module recycling should be carried out by the professional institutions at the end of module life cycle

*Copyright@2024V2 Specifications are subject to change without further notification*Only available in Australia